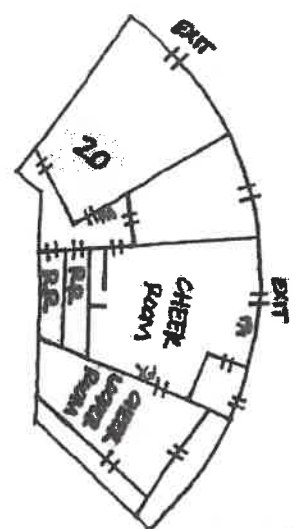
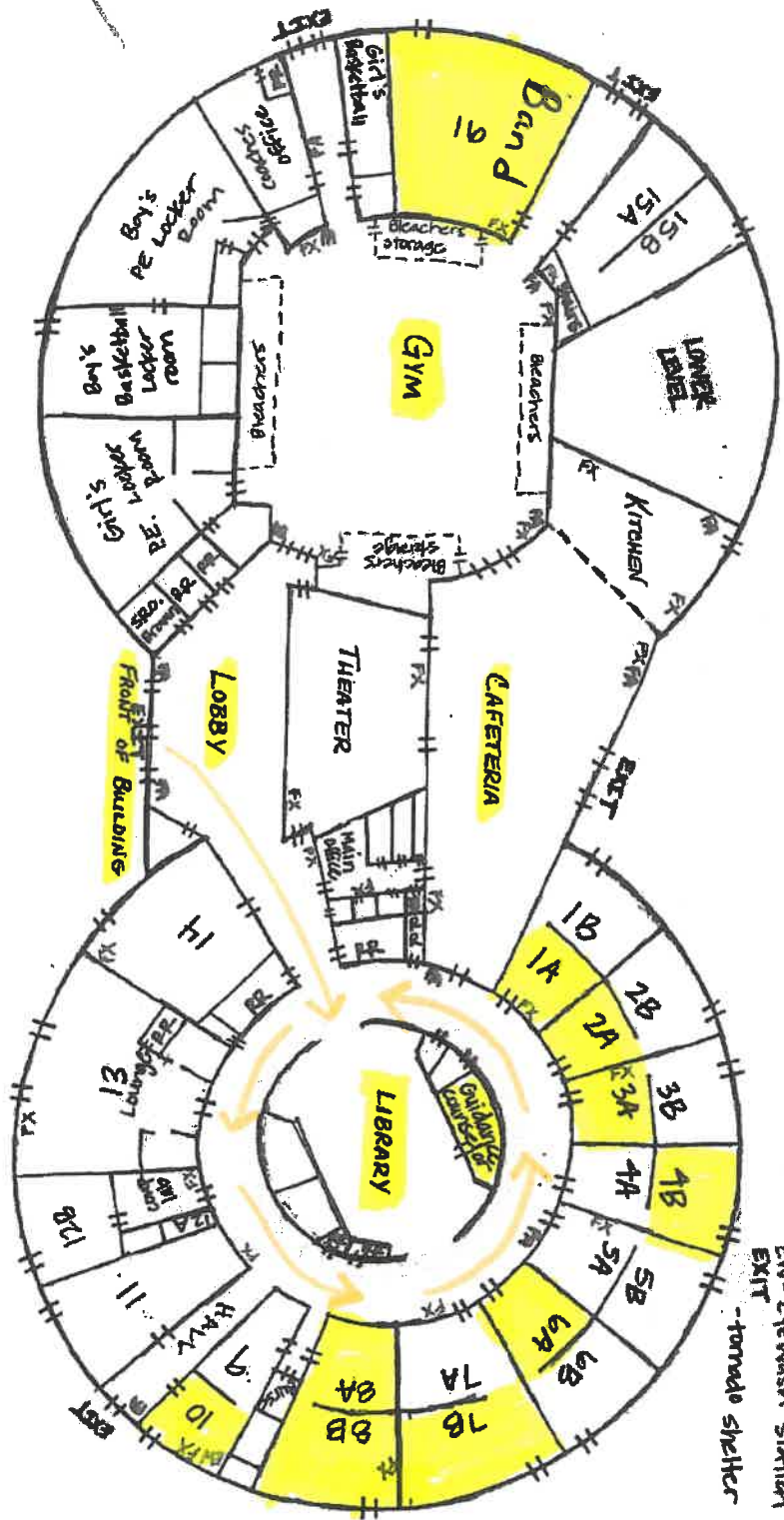


Lobby

Mrs. R. Baker & Mrs. Jackson

Martin Middle main classrooms

After entering the front doors, make a right and walk in the direction of the library. At the library, always "Charge right" as you enter the circle hallway. This is one-way traffic. The 6th grade classrooms are highlighted and labeled.



LOWER LEVEL

- FX = Fire Extinguisher
- FA = Fire Alarm Pull station
- PR = Restroom
- EW = Eyewash station
- EXIT = Exit
- tornado shelter